

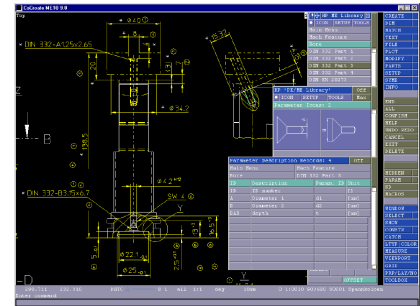
CoCreate OneSpace Drafting 2007 - 2D Library

Developed for OneSpace Drafting, this module provides a fully integrated standard part library and management system. 2D Library streamlines the design process by promoting design re-use and eliminating duplicate effort.

Product Features

International Standards

- Choose from a ready-to-use catalog of international standard parts (ISO, EN, and DIN), including:
 - Screws
 - Bolts
 - Nuts
 - Washers
 - Bearings
 - Pins
 - Bushes
 - Threads
- Use library parts by simply selecting and specifying part parameters
- Draw from 900 certified standards in total
- Select from a configurable set of 100 industry standards selectable at installation
- Choose from 500,000 different parts in total
- Make reliable decisions: built-in Construction Logic prevents incompatible part combinations.



Customization of Standard Parts

- Work from table-based database, which conforms to ISO CD 13584 parts 24 and 31
- Easily customize database by suppressing records of standards
- Add custom varieties to standard parts, e.g., extra-long bolts
- Add company-specific information to standard parts, e.g., stock numbers

Company Standards

- Add company-standard parts like:
 - OneSpace Drafting macro files
 - Parametric macro files
 - Geometry files
- Include your company parts in the Construction Logic to further avoid automatic combinations of inappropriate parts

2D Parts Management

- Use the assembly navigator to easily define standard assemblies with Construction Logic rules
- Check the history menu of recently used parts
- Use the icon generator to add standard parts to graphical menus

Ordering Information

2D Library	C120
2D Library Support	C120A
2D Library Subscription	C120Y

Prerequisites

OneSpace Drafting
(classic user interface)

System Requirements

Supported platforms:

- Windows® 2000™
- Windows® XP™ Professional
- Windows® XP™ Professional x64 Edition

For more information, please visit:
www.cocreate.com