

CoCreate® Backup License Server

Ensure your critical CoCreate solutions persevere in disaster situations

CoCreate Backup License Server offers both hardware- and software-based options for ensuring your critical CoCreate solutions persevere in disaster situations, without manual intervention or the cost of additional licenses. If a disaster arises, cold backup servers (those activated once an emergency occurs) move seamlessly into production so users continue to access their critical data and applications without interruption.

Key Benefits

- Provides automatic and convenient support in disaster situations
- Avoids any interruptions for users. Saves valuable time by seamlessly granting licenses

Features and Specifications

Hardware-Based Backup Solution

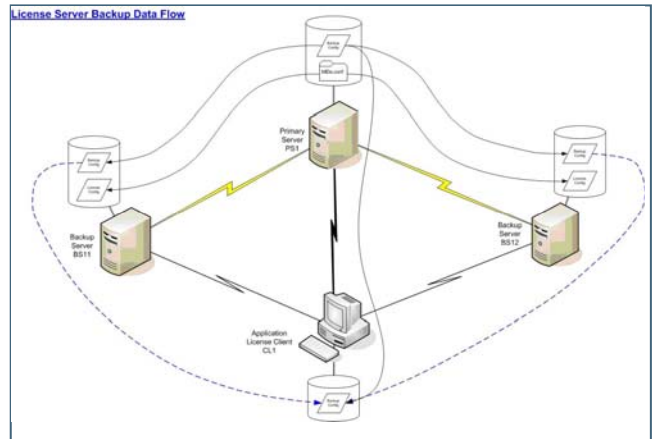
Leverages Micro Sentinel Universal (MSU) dongle

- Optimal support for cluster environments (e.g. HP Serviceguard on HP-UX®, Microsoft® cluster environment)
- Specially coded MSU security device (serial port MSU dongle) clones the physical ID of the primary license server security device
- Product licenses fully available for use on backup license server system
- Support for remote administration

Software-Based Backup Solution

(Does not require MSU device)

- Configuration of up to 2 backup license servers (Microsoft® Windows® only)
- Each backup license server provides licenses for up to 240 hours
- Primary server, backup servers, and applications communicate continuously, ensuring quick action if systems go down
- Client applications automatically redirect to backup servers when primary license server fail
- No user interaction required



CoCreate Backup License Server is an add-on module for the CoCreate License Server allowing even more flexibility with CoCreate product licensing

- No interruption for users
- System immediately notifies administrator when primary servers fail.
- Once the primary server is available again, all application licenses automatically switch back to the primary server

Prerequisites

To code the MSU backup security device, the physical ID of the original license server has to be provided at time of order.

System Requirements

CoCreate License Server 2008 supported operating systems:

- Windows Vista™ 32-bit and 64-bit Editions of Ultimate, Enterprise, and Business
- Windows® XP™ Professional 32-bit and 64-bit Editions
- Windows® Server 2003™ 32-bit and 64-bit Editions
- Windows® Server 2008™ 32-bit and 64-bit Editions
- ¹HP-UX® 11i

For more information, visit www.ptc.com/products/cocreate

1 Available only for hardware-based backup solution

© 2008 Parametric Technology GmbH (a subsidiary of Parametric Technology Corporation), All Rights Reserved. Information described herein is furnished for informational use only, is subject to change without notice, and should not be construed as a guarantee, commitment, condition or offer by PTC. PTC, the PTC logo, The Product Development Company, CoCreate and all PTC product names and logos are trademarks or registered trademarks of PTC and/or its subsidiaries in the United States and in other countries. All other product or company names are property of their respective owners.