

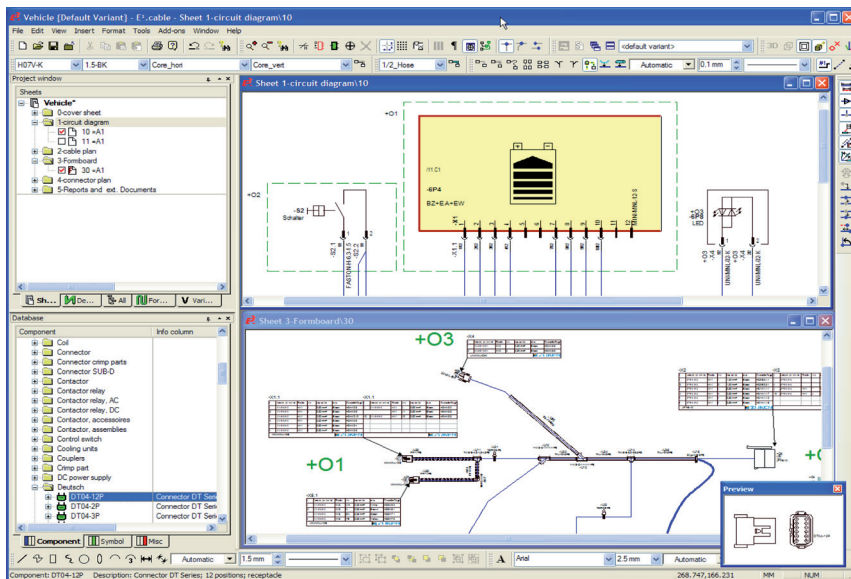


Design Nailboards (Formboards) for Producing Cable Harnesses E³.formboard

D A T A S H E E T

Introduction

E³.formboard is fully integrated within E³.cable and provides a complete solution for creating cable harness drawings for production. On any sized sheet one or more nailboard drawings can be created. Automatic functionality makes the placement, arrangement and dimensioning of individual segments easier.



Schematic and 1:1 scaled drawing for cable harness production

The E³.series Standard

- Completely integrated in Windows® environment
- User-interface in numerous languages; easy to switch
- Supports all Windows® fonts using UNICODE
- Configurable user interface and toolbars
- Object-oriented user interface with possibility to directly integrate in other applications
- Display drawings using different norms (DIN, ANSI, JIC)
- Supports any sheet format, e.g. DIN, Ladder, special formats
- Translate texts into any language
- Search mechanisms for symbols, devices, connections, texts and attributes...
- Context-sensitive Online Help
- 256 object-related display levels
- Print and plot using all Windows® standard drivers
- Supports standard formats like STEP, DXF/DWG, SVG, PDF, pixel graphics
- Bidirectional API (COM/DCOM Standard)
- Integrated database editor
- Compatible with all previous E³.series versions

The E³.series Base Functionality

- Automatic and parallel connections
- Drag & Drop
- Dynamic zooming and panning
- Save, load, copy, rotate and mirror drawings and areas
- Extensive functionality for exchanging symbols and components
- User-defined connection attributes
- User-defined grid sizes, fonts and line types
- Online cross-references for connections and devices
- Object and text hyperlinks also within E³.series projects
- Continuous verification of adherence to manufacturing specifications, such as multiple assignment of symbols and overcrowding of components
- Supports variants and options, Boolean operators and alias names

Special Functionality in E³.formboard

- Place single or multiple pin connector views
- Automatically place configurable assignment tables
- Connect single segments with individual line types
- Supports arced connection segments (B-Splines)
- Insert, delete and fix nodes
- Automatically stretch and compress segments
- Automatically calculate wire lengths over routing segments
- Rotate branches
- Place and check non electrical parts (mounting, tubes, hoses, ...)

Additional E³.series Modules

E³.view

E³.view is the free-of-charge viewer for all E³.series projects (.e3s) and special viewer files (.e3v). It can be used by anyone within a company or passed on to suppliers and customers.

E³.schematic

E³.schematic is the E³.series base module. Easy to use and operate. Provides complete functionality for electrical design, including inline terminals and connection plans.

E³.fluid

E³.fluid is the integrated design system for hydraulics, pneumatics, cooling and lubrication. Special functionality supports the development of fluidics in connection with electrical design.

E³.cable

E³.cable offers enhanced functionality for designing cables and cable harnesses. Different views of the design enable specific documents to be created for production, start up and service.

E³.panel

E³.panel is the module for panel layout and wiring. Optionally design the panel in 2D or 3D, place all devices and automatically connection wire pathways as specified.