

Create Circuit Diagrams for Machinery and Plant Applications

E³.schematic

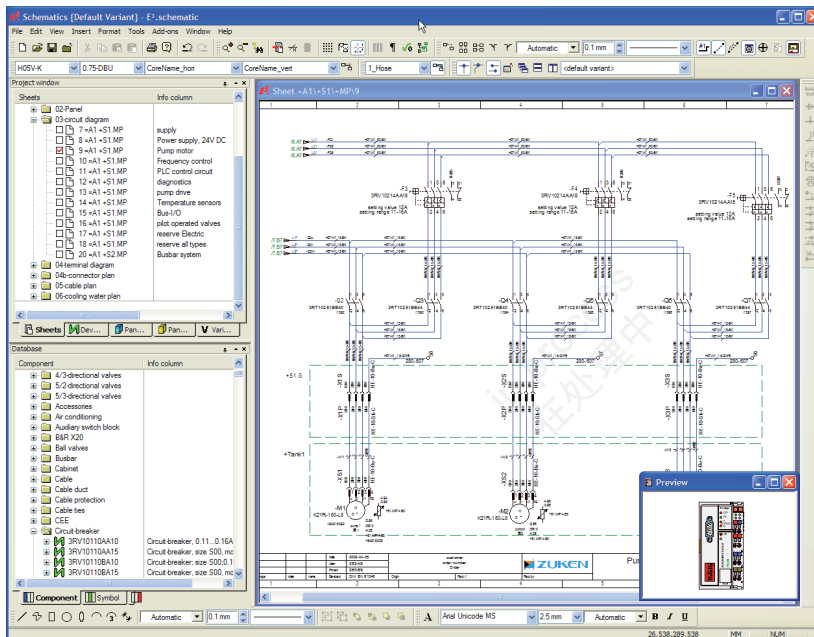
D A T A S H E E T

Introduction

E³.schematic is a complete and open CAE solution for the creation of circuit diagrams for electronic design. E³.schematic permits parallel development by different design teams.

This modern application is based on a common component and symbol database, which ensures the uniform display of circuit diagrams throughout a product's life cycle.

E³.schematic manages all data from the circuit diagram up to the terminal plan and all affiliated documents, such as bill of materials and connection lists or assembly instructions and datasheets. The extensive graphical functions allow for detailed documentation. This enables graphical descriptions to be bound to individual objects, regardless of whether moving, rotating or mirroring.



Standard module E³.schematic and database preview

The E³.series Standard

- Completely integrated in Windows® environment
- User-interface in numerous languages; easy to switch
- Supports all Windows® fonts using UNICODE
- Configurable user interface and toolbars
- Object-oriented user interface with possibility to directly integrate in other applications
- Display drawings using different norms (DIN, ANSI, JIC)
- Supports any sheet format, e.g. DIN, Ladder, special formats
- Translate texts into any language
- Search mechanisms for symbols, devices, connections, texts and attributes...
- Context-sensitive Online Help
- 256 object-related display levels
- Print and plot using all Windows® standard drivers
- Supports standard formats like STEP, DXF/DWG, SVG, PDF, pixel graphics
- Bidirectional API (COM/DCOM Standard)
- Integrated database editor
- Compatible with all previous E³.series versions

The E³.series Base Functionality

- Automatic and parallel connections
- Drag & Drop
- Dynamic zooming and panning
- Save, load, copy, rotate and mirror drawings and areas
- Extensive functionality for exchanging symbols and components
- User-defined connection attributes
- User-defined grid sizes, fonts and line types
- Online cross-references for connections and devices
- Object and text hyperlinks also within E³.series projects
- Continuous verification of adherence to manufacturing specifications, such as multiple assignment of symbols and overcrowding of components
- Supports variants and options, Boolean operators and alias names

Additional E³.series Modules

E³.view

E³.view is the free-of-charge viewer for all E³.series projects (.e3s) and special viewer files (.e3v). It can be used by anyone within a company or passed on to suppliers and customers.

E³.fluid

E³.fluid – the integrated design system for hydraulics, pneumatics, cooling and lubrication. Special functionality supports the development of fluidics also in connection with electrical design.

E³.cable

E³.cable offers enhanced functionality for designing cables and cable harnesses. Different views of the design enable specific documents to be created for production, start up and service.

E³.panel

E³.panel is the module for panel layout and wiring. Optionally design the panel in 2D or 3D, place all devices and automatically connection wire pathways as specified.

E³.formboard

E³.formboard – the module used to create 1:1 nailboard drawings for manufacturing cable harnesses. Quickly and easily place views, define the cable harness structure as well as specify the mounting and cable protection.